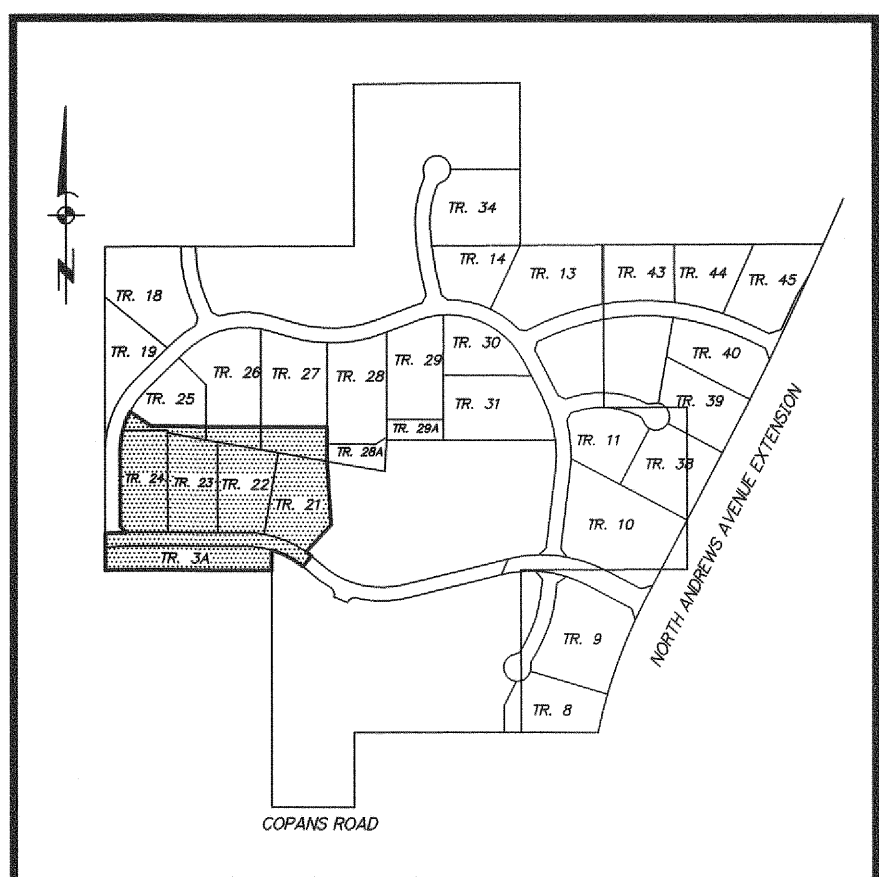
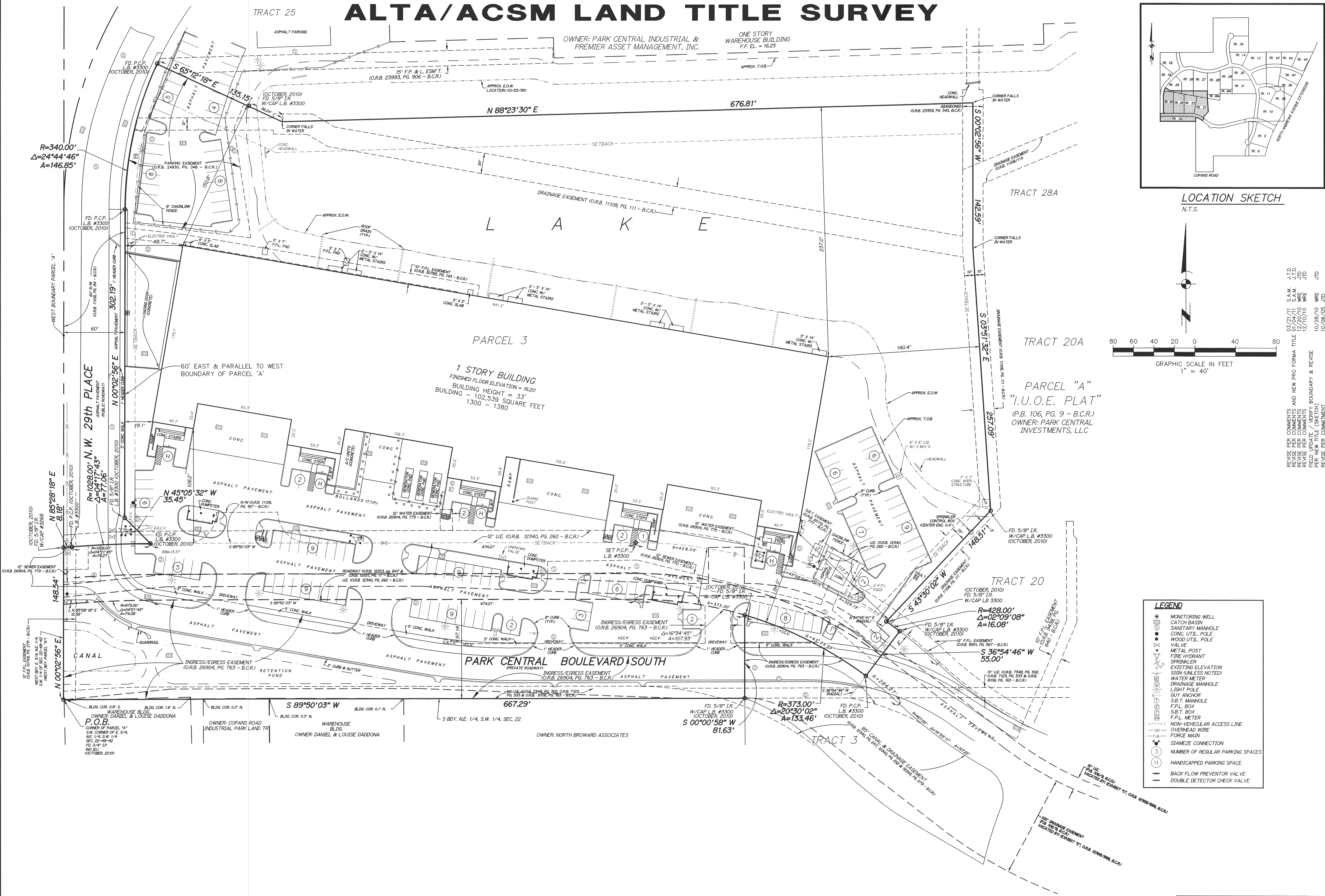
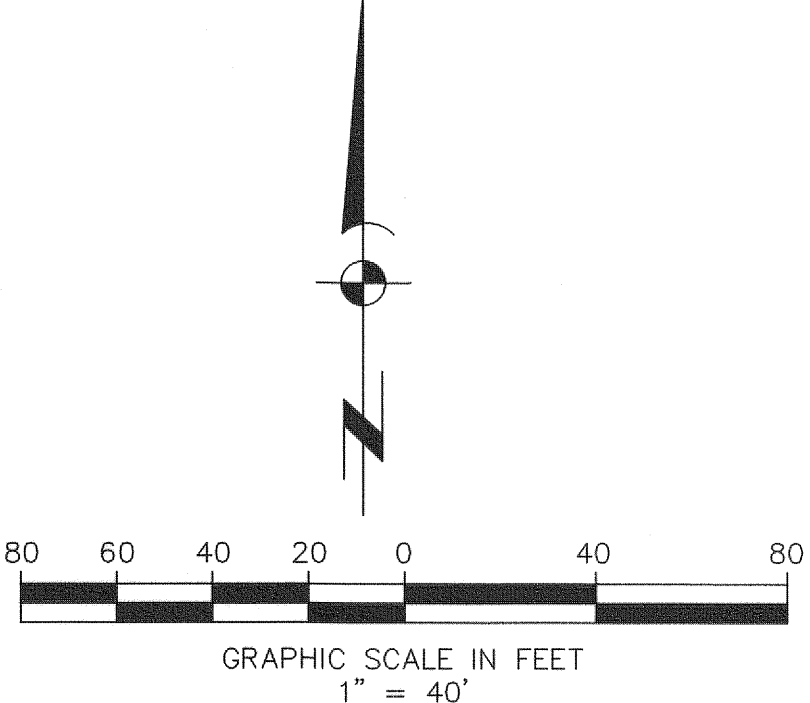


ALTA/ACSM LAND TITLE SURVEY



LOCATION SKETCH
N.T.S.



REVISIONS	DATE	BY	CK
UPDATE SURVEY & AS BUILT UTILS.	4/06/95	(SK)	M.D.A.
SLAB TIE-IN	(725/9)	J.A.F.	M.D.A.
FINAL SURVEY	(SK), F.B. 725/34-43 & D. COLL	6/25/97	J.A.F.
REVISED CERTIFICATION	(SK)	8/14/97	M.M.K.
UPDATE (EQUATABLE STANDARDS)	(SK)	12/04/97	J.A.F.
GENERAL REVISIONS PER CLIENT		12/10/97	J.A.F.
UPDATE SURVEY & REVISE CERTIFICATION		07/26/06	L.S.J.

LEGEND
MONITORING WELL
CATCH BASIN
SANITARY MANHOLE
CONC. UTIL. POLE
WOOD UTIL. POLE
VALVE
METAL POST
FIRE HYDRANT
SPRINKLER
EXISTING ELEVATION
SIGN (UNLESS NOTED)
WATER METER
DRAINAGE MANHOLE
LIGHT POLE
GUY ANCHOR
S.B.T. MANHOLE
F.P.L. BOX
S.B.T. BOX
F.P.L. METER
NON-VEHICULAR ACCESS LINE
OVERHEAD WIRE
FORCE MAIN
SLAMMEZ CONNECTION
NUMBER OF REGULAR PARKING SPACES
HANDICAPPED PARKING SPACE
BACK FLOW PREVENTOR VALVE
DOUBLE DETECTOR CHECK VALVE

NOT VALID WITHOUT
SHEETS 1 AND 2

ALTA/ACSM LAND TITLE SURVEY
BUILDING 13 - (33)
TRACTS 3A, 21, 22, 23, 24 & E-W ROADWAY
A PORTION OF PARCEL "A"
"I.U.O.E. PLAT"
(P.B. 106, PG. 9 - B.C.R.)
BROWARD COUNTY, FLORIDA

SCALE 1" = 40'	DATE	BY	CK
4/06/95	(SK)	M.D.A.	
J.A.F.	(725/9)	M.D.A.	
M.D.A.	(SK), F.B. 725/34-43 & D. COLL	J.A.F.	
M.D.A.	(SK)	M.M.K.	
M.D.A.	(SK)	J.A.F.	
M.D.A.		J.A.F.	
M.D.A.		J.A.F.	

AVIROM & ASSOCIATES, INC.
SURVEYING & MAPPING
50 S.W. 2ND AVENUE, SUITE 102
BOCA RATON, FLORIDA 33432
TEL: (561) 392-2594, FAX (561) 394-7125

